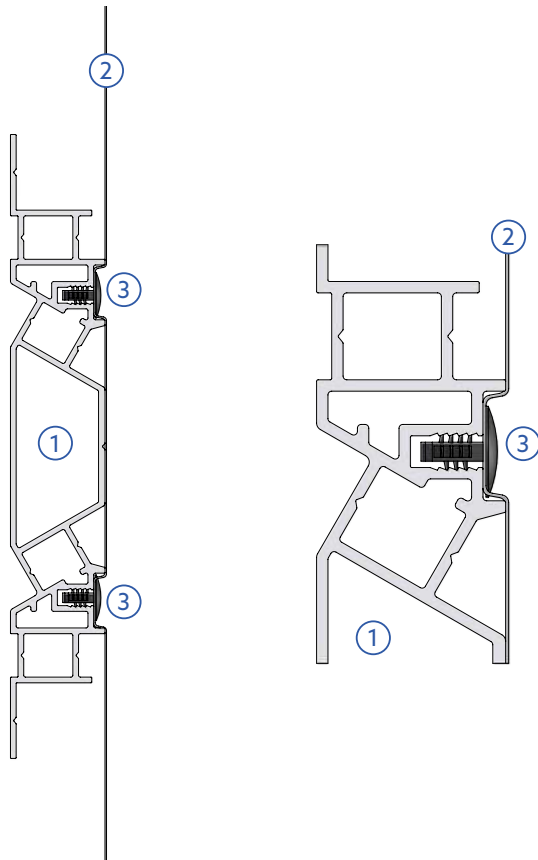


BFA-521 - Push rivet.



1	Horizontal BFP-100 profile
2	Facade membrane
3	Push rivet STRCA521

The horizontal **BFP-100 profile** features a serrated channel that allows the facade membrane to be secured within the profile using a **BFA-521 plastic push rivet / fixing pin**.

The position of these channels is recessed so that the push rivet is always set deeper than the working surface and thus **never interferes with the facade cladding**.

The push blind rivets / fixing pins can be installed in a staggered pattern (upper/lower channel) or in a single line.

Figures 1 and 2 show the staggered placement of the push rivet, through the insulation and into the designated screw channels in the horizontal profile. The push rivets can be easily pushed through the fabric of the cladding membrane.



FIGURE 1

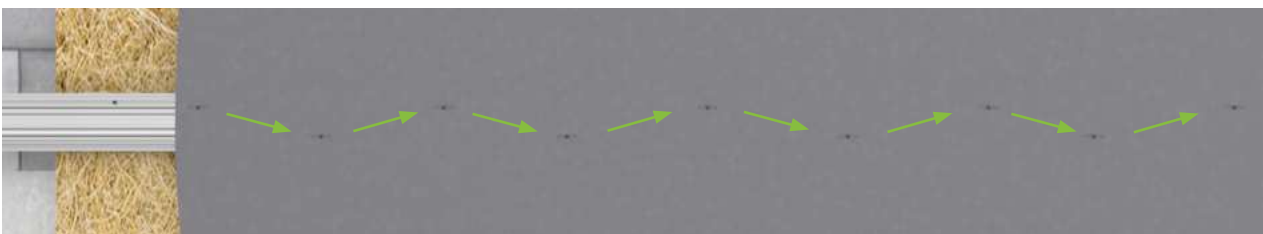


FIGURE 2